



Hewlett Packard
Enterprise

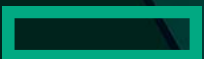
Leveraging Tech to Address Global Challenges & Health

Fred Tan

“

“The betterment of society is not a job to be left to a few. It's a responsibility to be shared by all.”

David Packard, Founder, Hewlett Packard



The strategic opportunity

Being a force for good is now also a source of business advantage

Businesses linking digital and sustainable transformation are

2.5x

more likely to be among tomorrow's strongest-performing businesses¹

¹Accenture, The European double up, strengthen competitiveness, January 2021
<https://www.accenture.com/ch-en/insights/strategy/european-double-up>

No room for compromise

Today's applications have an
insatiable appetite for resources

Data intensive | Data everywhere | AI powered | API driven

>100% data growth

The amount of global data is expected to
more than double in size from 2022 to 2026¹



¹ IDC Market Forecast May 2022 Enterprise Organizations Driving Most of the Data Growth US49018922

“Only 11 percent [of nonprofits] said the way their organization manages digital is highly effective.”

Jason Mogus and Austen Levihn-Coon, What Makes Nonprofit Digital Teams Successful Today?, Stanford Social Innovation Review

Doing good, better

Accelerating impact

Where and how HPE can do the most good

Community need

Understand urgent needs

affecting the world, especially underrepresented communities

Unique capabilities

Leveraging key strengths

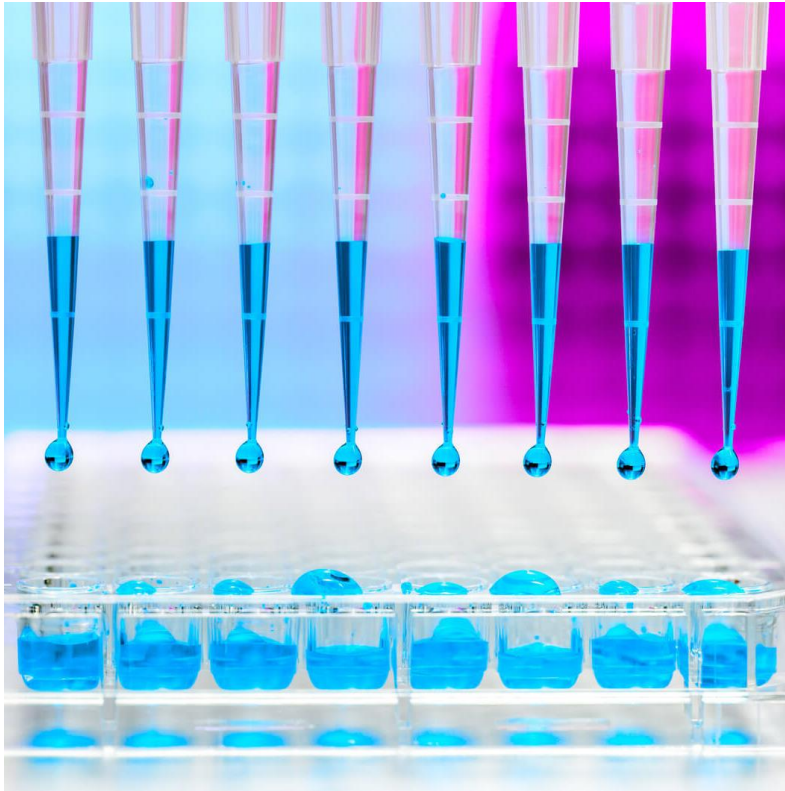
such as our unique technology and world-class talent

Strategic priorities

Fewer, bigger bets

instead of a confetti approach that enables the biggest impact

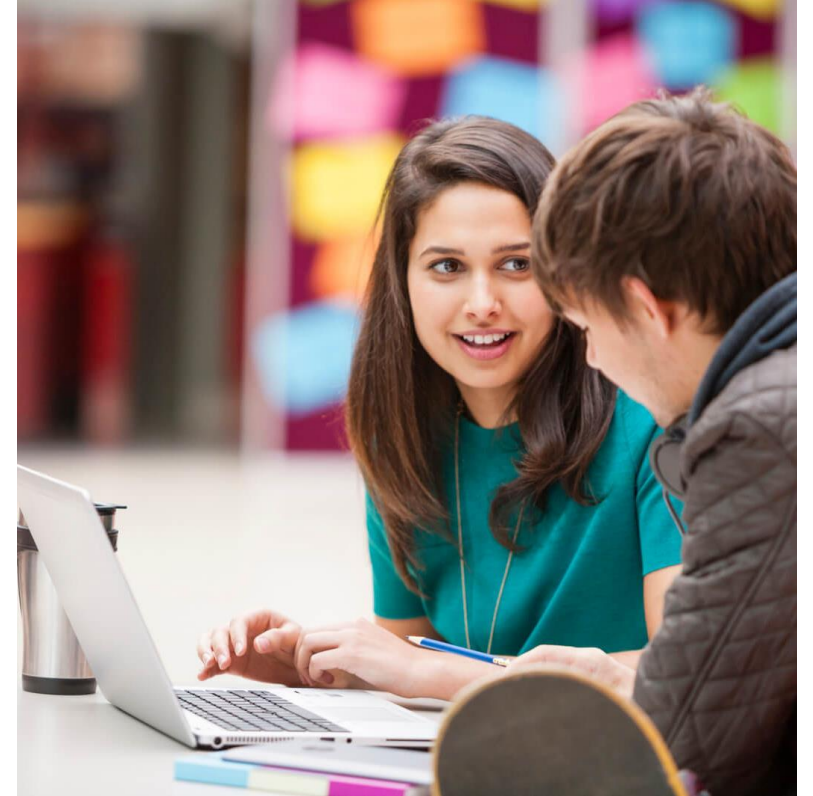
HPE's strategic focus



Healthcare



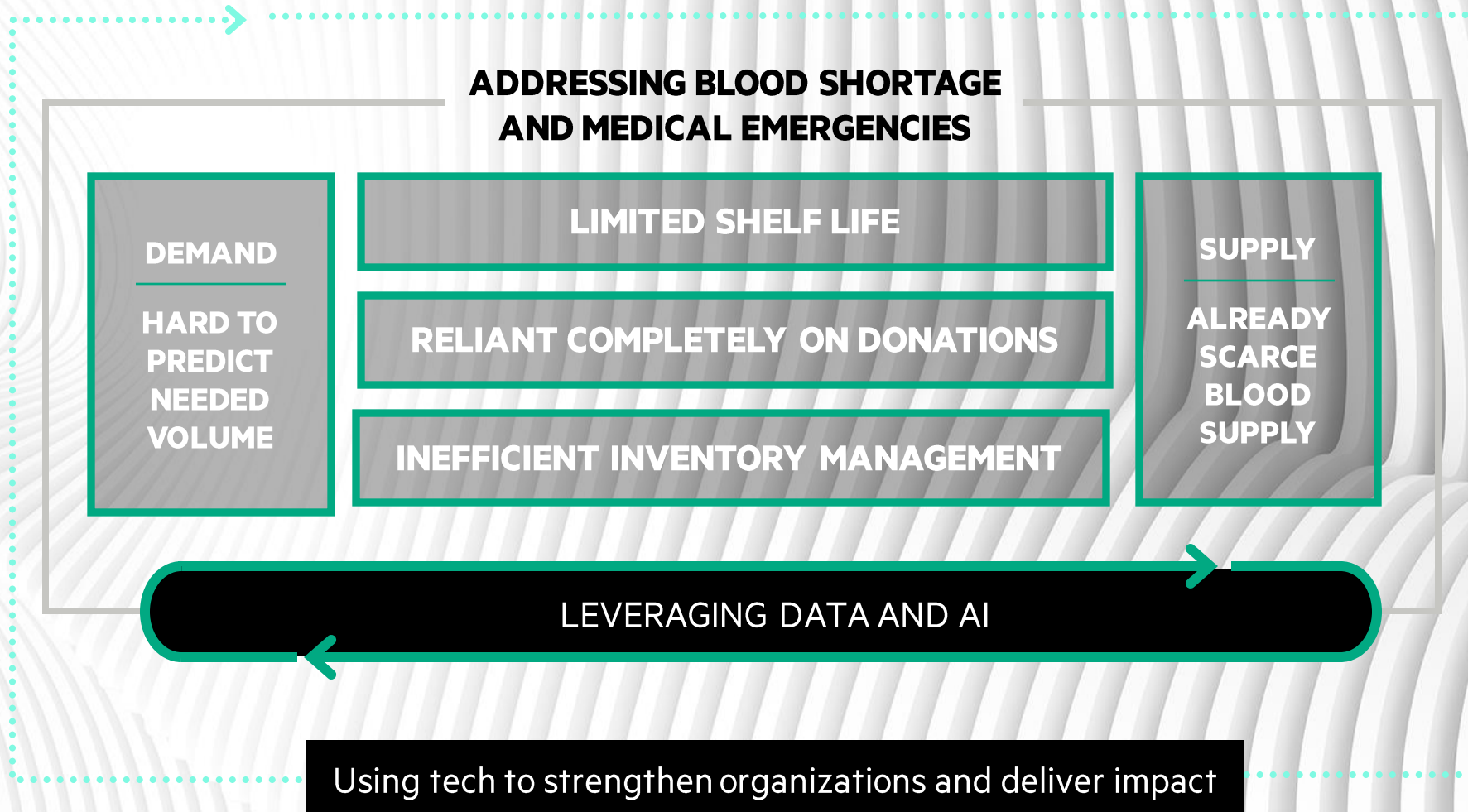
Community Resiliency



DEI & Human Rights



Strengthening health systems



Improving rural healthcare with eHealth Centers



300+ eHealth Centers in **22** states, serve **six million+** citizens; and help eradicate rare diseases like tuberculosis, hepatitis, and measles

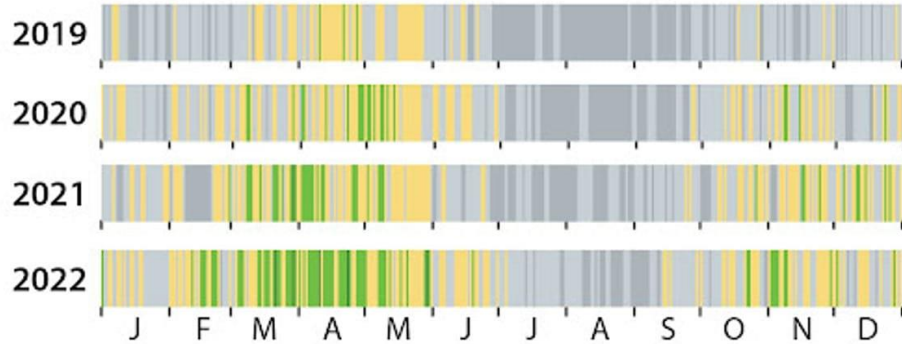


Empowering all to choose cleaner energy

Renewables' U.S. Power Market Share, Daily

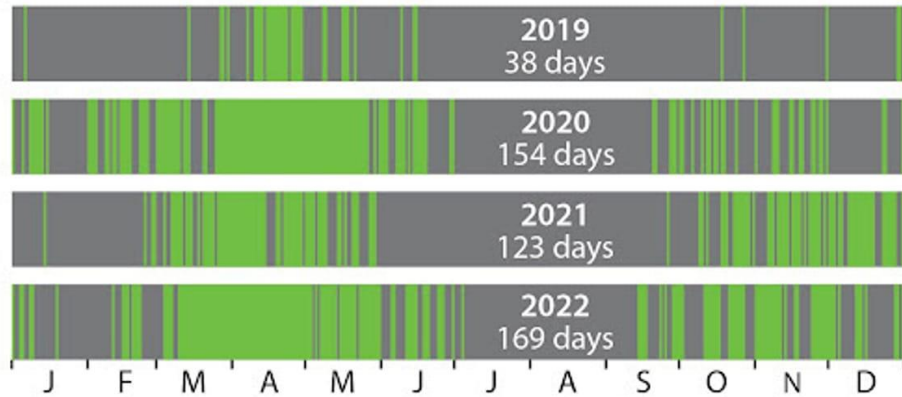
Includes only utility-scale solar, wind, and hydro

10–15% 15–20% 20–25% 25–30% 30–35%



Days When U.S. Renewable Power Exceeded Coal

Green bars; includes utility-scale solar, wind and hydro.



Source: EIA (hourly data for electric sector)

IEEFA

1

What is the gap?

2

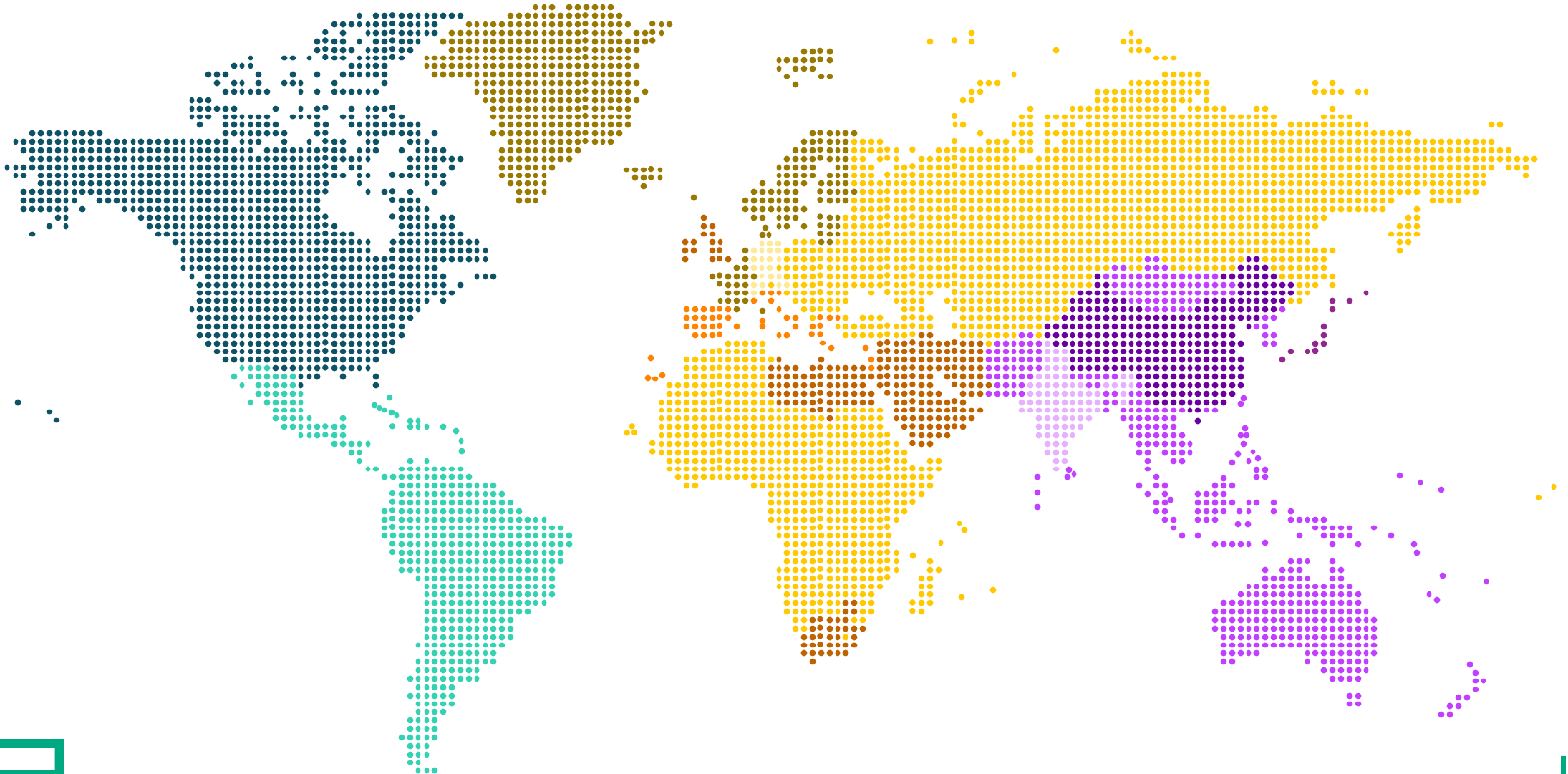
What are potential applications?

3

Who are potential direct users?

<https://www.watttime.org/>

Creating a more equitable world



The 5 guiding principles and needs to drive impact

1 Think data first

What data should organizations be collecting and what is the best way to quantify impact at the intersections

2 Leverage the potential of tech

Technology has the ability to further organizational missions, but few are thinking about it daily

3 Knowledge is key

Digitally transforming an organization could be costly, but failure to keep up with technical developments could cost more

4 Security is paramount

Drive optimal utilization; give each workload, service, rack, facility exactly what it needs; do more while consuming less

5 Partnerships for progress

Go far together via a partnerships approach to co-innovate, create shared value, and drive global impact



THANK YOU

